

# CH Padlock Tracker

## Keyless Padlock Tracker



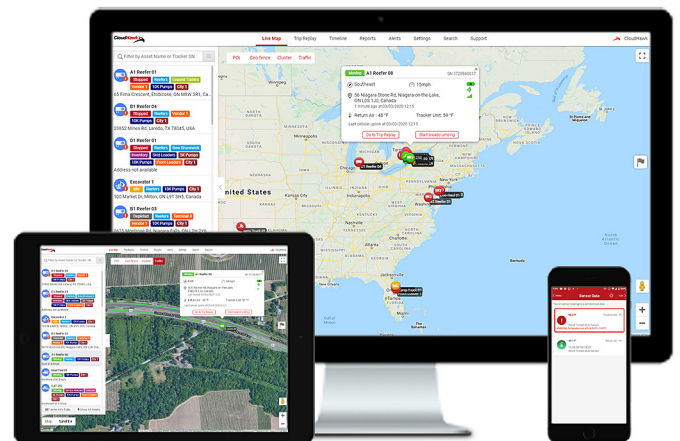
The CH Smart Lock offers organizations near-real-time visibility and customized access management tailored to your team's needs.

This IoT-enabled padlock facilitates remote unlocking without the necessity of physical keys, simplifying deployment and eliminating key management. Its Access Control feature maintains a comprehensive log of each instance of access, including timestamps, user identification, and duration.

For businesses seeking enhanced visibility into who accesses their locations or assets and when, the CH Padlock Tracker provides a robust solution.

Manage access across multiple geographic locations and bolster security by preventing theft and unauthorized entry.

Additionally, the system immediately alerts users via our mobile app in the event of any bypass attempts.



# CH Padlock Tracker

## Keyless Smart Padlock Tracker

### TECHNICAL SPECIFICATIONS

#### COMMUNICATIONS

HSDPA/HSUPA 800, 850, 900, 1800, 1900, 2100

Systems: GPS, GLONASS

BLE: 5.2

#### POWER

Powered by a 3.7V Lithium-ion battery with 5000 mAh capacity.

Actual battery life may be reduced by extreme temperatures especially with longer durations.

#### ENCLOSURE

Access Port: USB type C

Dimensions: 80 mm x 80 mm x 32 mm

Weight: 600g, 21.16 ounce

#### ENVIRONMENTAL

Operating Temperature: -20°C to 60°C

Storage Temperature: -40°C to 85°C

IP Rating: IP67 (weatherproof and water resistant up to 1m submerged)



- Near real-time reporting of location
- Easy installation for rapid mass deployment
- Ruggedized, IP67 waterproof housing
- Selection of various rigid or flexible shackle types and lengths
- Real-time notifications if shackle or lock is tampered with
- No physical key required! Authorized users can unlock remotely, all users can unlock using mobile app (in close proximity)



*While CloudHawk endeavors to maintain the highest level of precision in all published specifications, it's essential to recognize that actual field performance may vary due to a myriad of factors, including environmental conditions, installation methods, usage scenarios, and the involvement of third-party entities such as cellular providers. The specifications provided are estimations and should not be construed as definitive commitments or alterations to the terms and conditions of your purchase or lease, including but not limited to, product operational constraints and warranties. All specifications remain subject to possible adjustments without prior notification. To ensure you are in possession of the most up-to-date specifications, please visit our website at [www.cloudhawk.com](http://www.cloudhawk.com).*



Gain maximum visibility into your operations with CloudHawk.

1 (844) 344-9955 • [sales@cloudhawk.com](mailto:sales@cloudhawk.com) • [cloudhawk.com](http://cloudhawk.com)